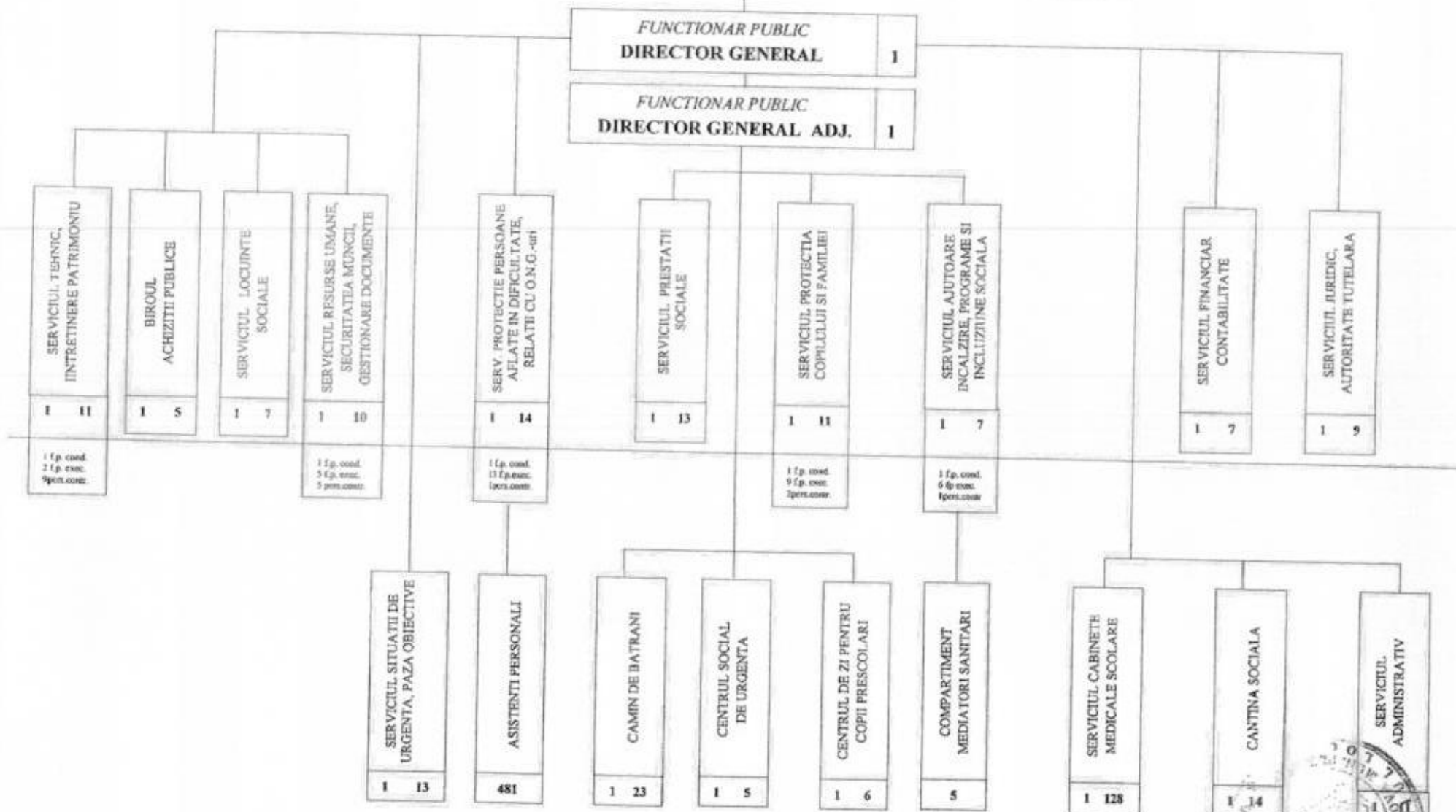


CONSILIUL LOCAL

Anexa nr. 1 la HCL

nr. 118 / 2018

ADMINISTRATIA SERVICIILOR SOCIALE COMUNITARE



Functionari publici Personal contractual Asistenti personali Asistenta medicala scolara

TOTAL: 799
Conducere
Executie

88	101	481	129
12	6	-	1
76	95	481	128

